



**Special
Olympics**
Southern California

Organization Structure Planning Overview





Athlete-centered

Athletes & Unified Partners

Community-driven

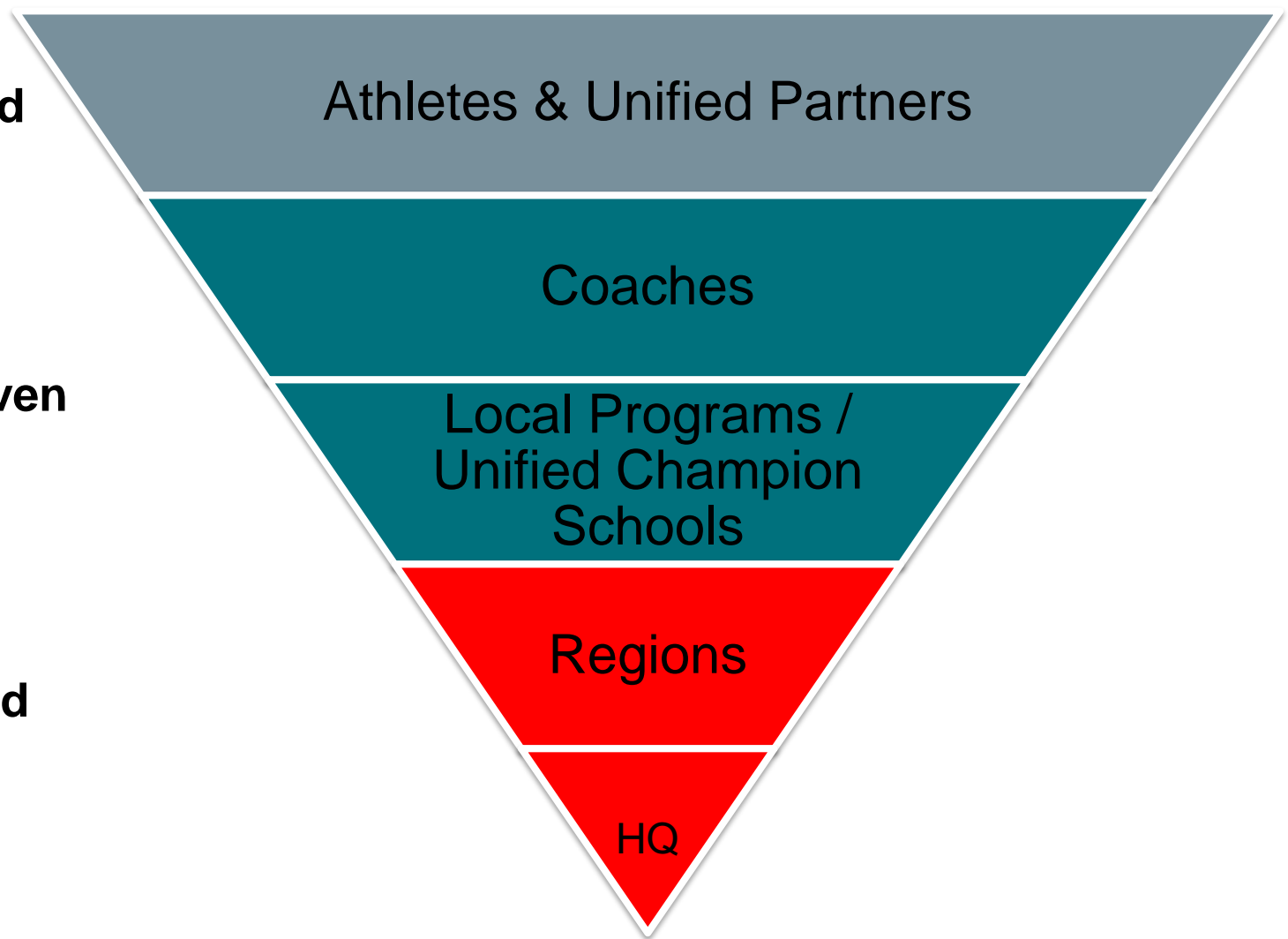
Coaches

Local Programs /
Unified Champion
Schools

Team-supported

Regions

HQ



Community-driven:

Empower community members to lead Special Olympics programming as accredited Local Programs and Unified Champion Schools, emphasizing collaboration, community resources, and sustainable outcomes under the Special Olympics brand.



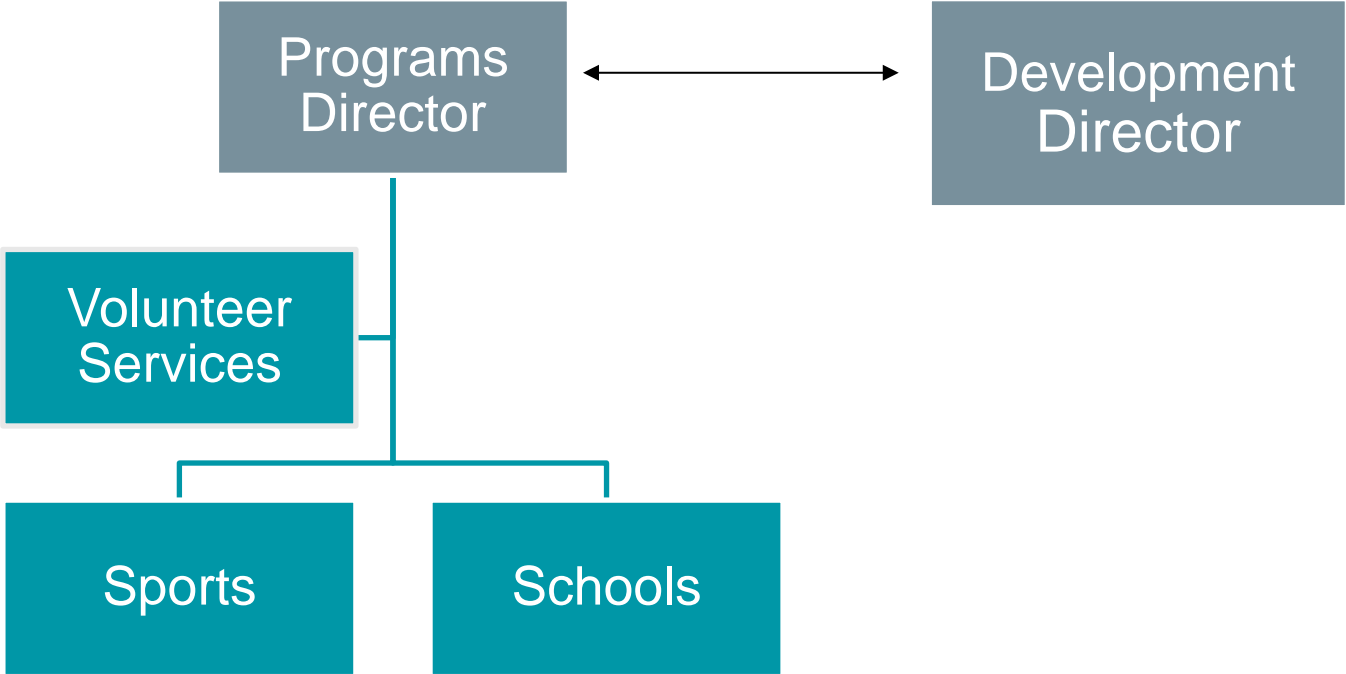
Region breakout



- **Region 1:** San Luis Obispo, Santa Barbara & Ventura Counties
- **Region 2:** LA County, Kern County, Inyo County
- **Region 3:** Riverside & San Bernardino Counties
- **Region 4:** Orange County
- **Region 5:** San Diego and Imperial Counties



Baseline Regional Structure





**Special
Olympics**
Southern California

For more info go to:
[sosc.org/
5regionmodelfaq](http://sosc.org/5regionmodelfaq)

